

The METNA News

Newsletter of the Merced Extension Triangle Neighborhood Association

Volume 16 Number 3

Visit us at: metna.org

May 2016

NEW 28-R-19th AVE. MUNI BUS STOP AT ARCH & ALEMANY

Muni Forward began with service improvements in January, 2015. A year ago, in April, the San Francisco Municipal Transportation Agency (SFMTA) launched their new "Rapid Network" routes, including service increases in bus frequency, increased hours of operation, including additional buses.

In September, 2015 SFMTA launched their second round of service improvements along with a new fleet of buses on many routes.

Now, on April 23, SFMTA began a new series of improvements, including the rerouting of the 28R (Rapid)-19th Avenue line. The new 28R route has been altered. No longer will the 28R serve the Daly City BART Station, but rather it now serves the Balboa Park BART Station and terminates at Geneva and Mission, with a layover at Alemany and Geneva.

As reported in the February METNA Newsletter, SFMTA honored METNA's request to

place a stop both northbound and eastbound at Arch and Alemany. The 28R will provide service every 10 minutes, all day Monday through Friday from 7:00am to 7:00pm. Starting at Alemany and Geneva, riders now have a direct connection to and from Balboa Park, 19th Avenue, Park Presidio, to a new terminal on California Street at 6th Avenue, shared with the 44-line. The 28R service to the Marina has been discontinued, but is still covered by the 28-19th Ave. local bus. The 28-19th Ave. local will still terminate at Daly City BART.

As a "rapid service" line, the 28-R will have stops at Balboa Park (connecting to BART and the J, K, M, 8X, 29, 43, and 54 lines), Arch and Alemany (connecting to the 54-bus line), 19th Avenue at Holloway (serving San Francisco State, and the M, 28, 29 lines), at Winston (serving Stonestown, and the M-Metro line and the 28 and 29-bus lines), at Taraval (connecting with the L-Metro line), at Quintara (48 and 66 bus lines), at Judah (connecting with the N-Metro line), then through Crossover Drive in Golden Gate Park to Park Presidio

with stops at Fulton (5R-bus line), at Geary (38 and 38R) and California (1-bus line), all heading east and west.

According to SFMTA, the 28 and 28R bus lines that run along the 19th Avenue corridor are "one of the Muni's busiest," carrying approximately 15,000 riders each day.

Maps of the 28R line, showing all stops, will be distributed at the May 10th METNA neighborhood meeting.

METNA MEETING

Tuesday, May 10, 2016
7:00pm, Palmetto Meeting Hall
640 Palmetto Avenue
(between St. Charles and Chester)

Invited Guests

Norman Yee, Supervisor
SF Board of Supervisors, District 7

Joanne Hayes-White, Chief
San Francisco Fire Department

Erica Artseros, Director
Neighborhood Emergency
Response Team
San Francisco Fire Department

Denise Flaherty, Captain
Taraval Police Station

Thea Selby, Vice President
Brigitte Davilla, Trustee
City College of SF Board of
Trustees

ALL NEIGHBORS WELCOME

Visit us at: metna.org

OCEANVIEW VILLAGE RETAIL COMPLEX UNDER NEW OWNERSHIP

The Broe Real Estate Group, an affiliate of Broe Companies, Incorporated, purchased the OceanView Village retail complex in mid-February. The Broe Group develops and manages commercial real estate property throughout the United States. The company was founded in 1972 and is based in Denver, Colorado.

Within a week of the ownership transfer, former owner Tom Culligan arranged a meeting with the new ownership group. METNA's president Marc Christensen and vice-president Glen Hatakeyama met with members of the Broe Real Estate Group, members of Citivest, the real estate agents, and members of Crosspoint Realty Services, who are managing the retail complex. The meeting was very positive and showed an eagerness on the part of the new owners to fill the vacant retail spaces in a timely manner.

METNA—CITY SERVICE NUMBERS

METNA annually provides emergency service numbers as a courtesy to our neighborhood residents. Please understand telephone numbers do change from time to time, so we cannot guarantee the accuracy of all numbers listed. Numbers were in service as of April, 2016. All numbers are area code 1+415, unless otherwise noted.

Please let METNA know if you would like any additional numbers added. Some numbers have been removed, others added to 311(see below).

Emergency: 911 (from cell phone: in San Francisco: 911, or in/out SF: 553-8090)

Police, Non-emergency: 553-0123

Human Services Hotline: 211, 24 hours (direct service link M-F, 9:30a-5:00p)

SF Customer Service Line: 311, 24 hours (for TTY, call 701-2323)
(outside SF call 701-2311)

Telephone Information (Directory Assistance): 411

Transportation Hotline: 511

Telephone Repair, AT&T: 611

California relay for hearing impaired: 711

Underground Service Alert (USA) locating underground utilities: 811

Anonymous Tip Line: (Taraval Station) 242-9753; (General) 392-2623

Animal bites to report: 554-9422

Animal Care & Control: 554-6364; Emergency: 554-9400, non-emergency: 554-9406

BART Customer Service: 510-464-7134

BART Lost and Found Line: 510-464-7090

BART Police: Emergency: 510-464-7000; Non-emergency: 877-679-7000

BART Transit Information: 989-2278

Bay Area Air Quality Management District: 800-334-6367

Bee Swarms (police non-emergency, info on beekeepers): 553-0123

Building permits: 558-6070

Child crisis hotline: 970-3800

City Attorney, Hotline (incl. code enforcement): 554-3977

Clipper Card, registration/information: 877-878-8883

Dept. of Health Code Enforcement: 252-3805

Dept. of Parking & Traffic: 553-1943

District Attorney, Victim services: 553-9044

Domestic Violence services: 877-503-1850; National hotline: 800-799-7233

Emergency Services, Office of Disaster Preparedness: 558-2700

Flooded streets, during storms, SFPUC: 695-2096

Fire Department, Non-emergency: 861-8000 or 558-3300

Fire Protection, Bureau of (BFP): 558-3300

Garbage pickup/ Trash not emptied (Sunset Scavenger/Recology): 330-1300

Garbage Service Complaints: 252-3872, or 252-3874

Graffiti, Police Report Hotline: 278-9454

Home Water Supply Emergencies: 923-2400

Homeless Outreach Team, (SFHOT) 24-hour service line: 734-4233

Mosquito activity, reporting: 252-3806

Municipal Transportation Agency, Customer Service Center: 701-3000, or 554-500

Neighborhood Emergency Response Team (NERT): Lt. Erica Arteseros, 970-2022

Newspaper racks, damaged or abandoned: 554-6917, or 554-5905

P. G. & E.: 974-1555; 24 hour service: 800-743-5000; Outage: 800-743-5002

Pets, lost hotline: 567-8738

Poison Center: 476-6600 or 476-2845, 800-222-1222

Public parking information; SFPark, Text: 877877

Rape Crisis: 24 hours, 647-7273

Recycling, Sunset Scavenger pickup: 330-1300

Recycling, (CalRecycle) recorded message on locations/hours: 800-732-9253

Residential Permit Parking: 503-2020 or 701-3000

SamTrans Information: 800-660-4289

SF SAFE: 673-7233 or 553-1982

Spare the Air Alert: 877-460-2876

Suicide Prevention: 24 hours, 781-0500

Supervisor Norman Yee, District 7: 554-6516

Taraval Police Station: 759-3100 or 553-3113; website: www.taraval.org

Captain Denise Flaherty; captain's clerk: 759-3123

Day & night platoon commanders: 759-3102

(cont'd on page 3)

METNA COMMUNITY CALENDAR

METNA MEETING SCHEDULE

7:00pm Palmetto Meeting Hall

@ 640 Palmetto Avenue

Tuesday, May 10, 2016

Tuesday, August 9, 2016

Tuesday, November 8, 2016

POLICE COMMUNITY MEETING

A new schedule of dates, times, and locations of the Police Community Meetings is available on line at:

www.taraval.org

OCEANVIEW VILLAGE HOA MEETING

7:00pm @ OceanView Village HOA

Office. Contact the OVV-HOA at 650-757-9675 for dates and times of the meetings.

TARAVAL POLICE STATION WEBSITE

www.taraval.org

A partial cost of the printing of this newsletter is underwritten by FedEXOffice, Colma

METNA OFFICERS

President	Vice-President
Marc Christensen	Glen Hatakeyama
60 Kempton Ave.	207 Chester Ave.
415 585-2465	415 333-0197
christensen.marc	ragtime217@
metna@gmail.com	gmail.com

Secretary	Treasurer
Terry Watson	Richard Zerga
272 St. Charles Ave	24 Kempton Ave.
watsoclark@	rjz1@comcast.net
comcast.net	

Sergeant at Arms	Neighborhood
Neil Hunt	Improvement
239 St. Charles Ave	Steve Heide
415 308-3486	306 St Charles Ave
	650 991-0463

Executive Committee

Glenn Rogers	Eric Berquist
3425 Alemany Blvd.	233 Chester Ave.
415 333-9317	415 939-2377



(Service Numbers cont'd from page 2)

Trash/hazardous waste on private property, M-F 8:00-5:00: 252-3800
 U.S. Postal Service, Information & services: 800-275-8777
 Water Department Emergency: 923-2400 or 551:3000; 24 hrs 550-4911
 West Nile Virus hotline: 877-968-2473

Continue to call : 311 (ask for tracking # to follow progress)

Building code enforcement; illegal construction	Dept. Of Public Works emergencies
Graffiti removal	Excessive litter
Illegal dumping	Illegal parking
Muni information/complaints/commendation	Muni bus shelters: broken glass/ graffiti/signs missing, not working
Lost and found	Public property maintenance issues
Parks: maintenance/safety	Sewer repair complaints
Public Utilities: emergency services	Street sign repair/missing/damage
Street & sidewalk repair	Traffic signal repair
Street trees: maintenance/removal	
Damaged/fallen trees	
Other City services: call 311 and they will direct your call	

BUSINESS OF THE ISSUE

HERTZ

3911 Alemany Blvd, Suite 1003
Branch Manager: Ariane Nzoutchoum
Phone: 650-994-1192
Hours: Mon-Fri, 7:00am-5:00pm
Currently closed on Sat & Sun.

Hertz opened on September 21, last year. The neighborhood has a convenient car rental company serving the community. Whether you need a car for a day or a month or more, Hertz offers everything a car rental facility has. Hertz offers very competitive rates and benefits, plus gives pickup and delivery service from private residences or businesses. Located at OceanView Village next door to Subway, in the eastern portion of the retail complex. Visit Hertz and ask about their special offers. For reservations you may also visit hertz.com.

SFMTA RESIDENTIAL PARKING PERMIT EVALUATION AND REFORM PROJECT

The San Francisco Municipal Transportation Agency (SFMTA) is in the process of re-evaluating its Residential Parking Permit (RPP) program. The RPP program begun in 1976, to establish parking zones within San Francisco to provide limited parking (1 hour, 2 hours, 4 hours) basically for commuters in residential neighborhoods. The program has grown over the past 39 years to include over 30 such zones. The program allows for residents with a valid sticker for their zone to park in excess of the posted daily time limits.

The evaluation, including ways to reform the program in light of changing driving and parking habits in the city will focus on several components:

- public input over the next few months to solicit comments and concerns
- identifying opportunities to improve customer service
- collection and analysis of data related to existing motorists trends regarding parking availability
- review of best practices related to parking management in residential areas
- evaluation and development of policy options
- re-evaluation of fees and parking control officer assignments
- new policy proposals to the SFMTA Board of Directors

This fall the SFMTA will gather the information and community input to re-evaluate and reform the RPP program. For more information visit: <https://www.sfmta.com/projects-planning/projects/residential-parking-permit-evaluation-reform-project>, or email: InfoRPP@sfmta.com.

CAR BREAK-INS CONTINUE TO PLAGUE S.F. AND THE M.E.T.

Beginning in 2015 and continuing through the first four months of 2016 auto break-ins in San Francisco continue at an increased rate. The same stats are true in the Taraval Police District and in the Merced Extension Triangle. Earlier this year on a weekend night, nine cars were hit on Head Street and several more on Arch.

The Police Department took 25,899 reports of car break-ins throughout San Francisco in 2015. That statistic is an average of 71 cars a day. Although there tends to be a spike around the holiday season the increase is noticeable throughout the year. The spike in auto burglary is up over 70 per cent in the past five years throughout the City. In the Taraval Police District the same pattern appears. It is not known how many cases go unreported.

The way to prevent your vehicle from becoming a target and reducing the chance of a break-in revolves around a few simple precautions:

*Park in a well -lit and busy area. Avoid isolated areas if possible.

*Do not leave any personal or valuable items inside your vehicle, especially in plain sight or covered.

*Remove all electronic devices, including garage door openers, GPS mapping systems, FASTrack toll readers, and removable stereo products when parked overnight.

*When shopping, lock all necessary valuables in your trunk BEFORE arriving at your destination.

*Reduce your profile of being targeted by using common sense.

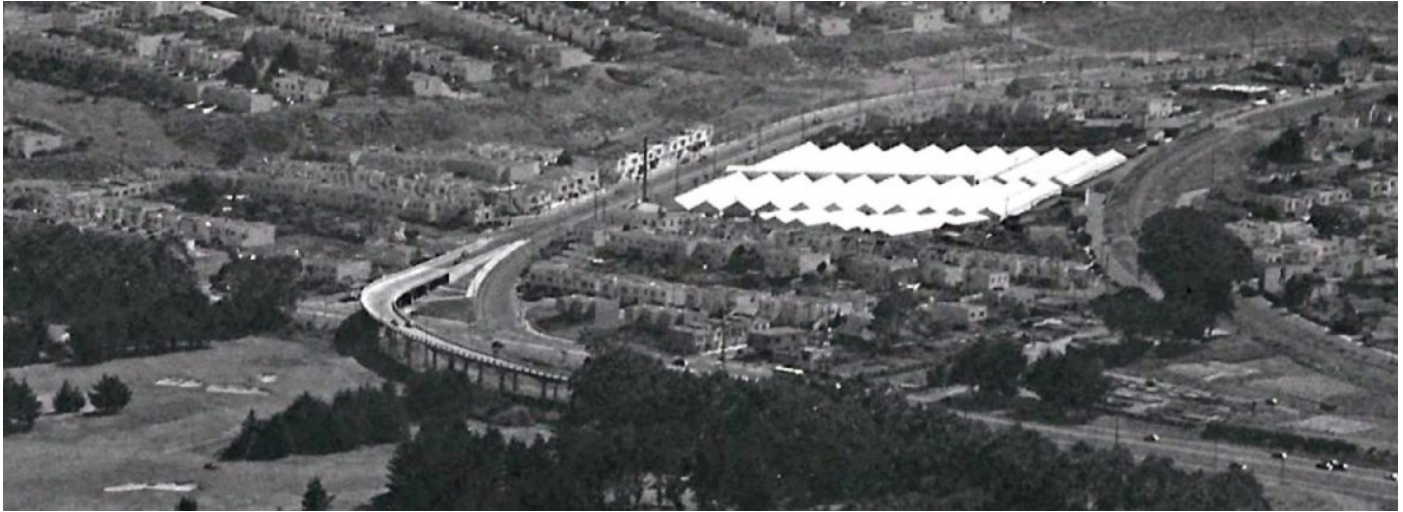
*Call 9-1-1 if you see someone peering into vehicles, tampering with a vehicle, or if a crime is in progress.

*Report all break-ins and theft to the SFPD at 415-553-0123. You can also file a report at any district police station or online at www.sfpd.org.

CLEAN POWER SF ROLLOUT TO BE SMALL

Clean PowerSF will begin sometime this month in San Francisco, announced by the San Francisco Public Utilities Commission (SFPUC). At first only businesses in Supervisorial Districts 5, 8, and 10 will be enrolled. By August, residential customers in Districts 5 and 8 are projected to be enrolled. Clean Power SF is the community choice aggregation renewable energy program, providing cleaner electricity to customers. There is currently no timetable for other parts of San Francisco, including Districts 7 and 11 to begin enrollment.

In 2012 a market research study showed what districts favored Clean PowerSF. The support was less in Districts 7 and 11 than citywide. A target date of 2020 for the entire city is still under discussion at the SFPUC. Regarding updated information, go to: www.cleanpowersf.org.



Alemany Bridge (in foreground)

Construction began in January, 1950

photo courtesy of the History Guild of Daly City/Colma

Photo taken June 12, 1951

NEIGHBORHOOD WATCH

19TH AVENUE/JUNIPERO SERRA IMPROVEMENT PROJECT

The 19th Avenue/Junipero Serra Improvements Project is about to begin. This much-needed upgrade to the current Muni and pedestrian conditions at the intersection will include a new pedestrian refuge spot while crossing the intersection. Also included in the project are new curb ramps, the relocation of traffic signals along with a Transit Signal Priority, and the restriping of northbound lanes on Junipero Serra and 19th Avenue, at the intersection. The project is scheduled to take several months to complete.

NEW METNA WEBSITE

In February the executive board approved the development of a website for our neighborhood association, and our treasurer, Rich Zerga volunteered to make it happen. This site will have back issues of the METNA News, announcements, reminders, scam alerts, and other items of interest to our residents and neighborhood. The site can be accessed at <metna.org>.

DEVELOPMENT OF SISTERHOOD GARDENS

In early April, SFDPW cleared the area set aside for Sisterhood Gardens at the greenbelt on the north-east corner of Arch and Alemany.

Trees and tree stumps were removed in preparation of the DPW parcel becoming a community garden. More information on this project will appear in future METNA newsletters.

ONGOING MEETINGS REGARDING AIR & SOIL SAMPLES

With regards to the Parkmerced Project, METNA has led the way to establish a protocol for air and soil sample testing prior to and during the 30-year project. Ongoing meetings have taken place with METNA, other neighborhood associations in close proximity to the development, along with the San Francisco Department of Public Health, and the Parkmerced developers. The meetings will outline what steps will be taken to ensure the safety of everyone during all phases of the project. A full report will be explained in upcoming editions of the METNA News.

GUARD RAIL ON JOHN DALY BLVD. EXIT

Preliminary work began in early April on the southbound John Daly Blvd. exit off of I-280. A new concrete guardrail barrier is planned behind OceanView Village along with a fence and sidewalk improvements, adjacent to Niantic Avenue, within the coming weeks. Some of the work will be done at night with the closure of the exit ramp. These safety improvements have been requested by METNA and are being funded by CalTrans.

METNA REMINDER

FEEDING PIGEONS IS ILLEGAL (SEC. 486 M.P.C.)

It is against the law to feed pigeons on the streets or sidewalks of San Francisco. The huge feral pigeon population is a health hazard and creates many problems in the city. Pigeon feeding produces over breeding. When a person feeds pigeons, they lose their natural ability to scavenge and survive on their own. You can help keep the neighborhood safe and clean and the pigeon population under control by not feeding pigeons. Keep edible garbage away from pigeons, seagulls, and other animals and rodents by discarding all items in a securely covered garbage container.

Do not feed pets outside as this can become a source of food for unwanted animals.

The Department of Public Works and the San Francisco Police Department suggest reporting pigeon feeders to SFPD at 415-553-0123 (the non-emergency police number). Violators may be cited and fined.

MUNI MOBILE APPLICATION

Muni Mobile is available for iPhones and Android phones. The free Muni mobile app can be used for bus, rail, and cable car rides on Muni. Go to sfmta.com/munimobile for complete details.