

The METNA News

Newsletter of the Merced Extension Triangle Neighborhood Association

Volume 17 Number 4

Visit us at: metna.org

August 2017

ACCESS AND INTERMODAL IMPROVEMENTS TAKING PLACE AT DALY CITY BART

In early June BART began working on the long-awaited Daly City Station Intermodal and Access Improvement Project. For several years BART staff have been coordinating with local stakeholders and partner agencies including CalTrans, SFMTA, SFCTA, SamTrans, SFSU, Parkmerced, the City of Daly City and surrounding neighborhoods, including the Merced Extension Triangle Neighborhood Association, to plan for a successful improvement project. The project is funded by San Francisco Propositions AA and K, State STIP funds, and San Mateo State Prop 1B funds.

The project includes improvements that allow BART to accommodate the planned increase in bus and shuttle bus services to the Daly City station, while providing higher quality bus and shuttle passenger waiting areas and improve the passenger transfer experience.

The project began with a redesign and paving of the De Long Parking Lot (upper BART service lot) that includes

a new bus layover area for Muni and SamTrans busses. Other improvements include demolition of the existing bus canopy covering the intermodal bus area, as well as installation of new bus shelters. LED lighting, seating, railings and sidewalks, and public art will be an element of the project, defined through a separate art process following construction work.

The second phase, currently taking place, includes replacing sections of sidewalk at various locations throughout the station to provide a safer path of travel to and within the station. Work is taking place weekdays from 7:00am to 7:00pm. A safe path for pedestrians has been set up to ensure that they do not enter the construction areas.

The third phase of work will include resurfacing the small parking lot along De Long Street, plus the reconstruction of the ADA ramp that runs from the Upper De Long Lot to the Intermodal Bus area below. That work will proceed through the fall of 2017.

The final phase of the work will take place at the Intermodal Bus area. The contractor will be fabricating new shelters off-site. When the shelters are completed the contractor will install the shelters along with construction of new sidewalks, railings, curbs and islands, lighting and seating in the Bus Intermodal area.

BART urges caution when moving through the area and directs pedestrians to pay attention to directional signs and barricades indicating construction zones and safe pedestrian pathways. BART states, "Your safety is our priority. We apologize for any inconvenience this project may cause and appreciate your patience as we make improvements to the Daly City BART station."

METNA has invited BART representatives to inform residents of the ongoing construction and answer questions at our August 8th METNA neighborhood meeting.

TWIN PEAKS TUNNEL PLAYS VITAL ROLE IN DEVELOPING AREA WEST OF TWIN PEAKS

This article is **PART ONE** of a three part series on the area west of Twin Peaks and the opening on the Twin Peaks Tunnel in February of 1918.

In the early 1800s, the land which is now West Portal, Ingleside, Ocean View, and the Merced Extension Triangle was part of Rancho San Miguel. The 4,443-acre Rancho San Miguel extended from West Portal, northeasterly to Mount Sutro, southeasterly to San Jose Avenue, and southwesterly to Daly City. Rancho San Miguel was granted to Jose Noe by the Mexican government in 1845. A large portion of the rancho east of Twin Peaks was sold during the 1860s and 1870s, with the remaining part reduced to approximately 1,200 acres when purchased by Adolph Sutro, in 1880. By the 1890s Sutro began a residential development known as "Lakeview," today's Ingleside. The Ingleside Racetrack was built on adjoining land and opened in 1895. Large portions remained mostly undeveloped until 1910 to 1912 when parcels were sold to eventually become Forest Hill, St. Francis Wood, and West Portal and then beyond the Ocean Road border to become Ingleside and Ocean View. The area to the southwest, known as Rancho Laguna de la Merced, in and around Lake Merced, was purchased and held by the Spring Valley Water Company from the 1860s through the 1930s. The Spring Valley Water Company leased about 300 to 400 acres to farmers as their vast land holding stretched for miles to the south.

cont'd on page 4

METNA MEETING

Tuesday, August 8, 2017
7:00pm, Palmetto Meeting Hall
640 Palmetto Avenue
(between St. Charles and Chester)

Invited Guests

Supervisor Norman Yee, Dist. 7
SF Board of Supervisors

Carlos Rojas, Chief of Police
BART Police Dept.

Mary Grace Houlihan, Engineer
Bay Area Rapid Transit

Richard Gauss, Lieutenant
Taraval Police Station

Harlan Kelly, General Manager
Steven Ritchie, Asst. General Manager
San Francisco Public Utilities Commission

Derrick Brown, Director
Kelenia Olsen, Community Liaison
Mayor's Office of Neighborhood Services

ALL NEIGHBORS WELCOME

CURBSIDE RECYCLING & COMPOSTING YOUR GARBAGE

As refuse rates rose 14.42% as of July 1, it is time to revisit curbside collection. A recent survey in the Merced Extension Triangle found that only 7 out of 10 households (71%) in the neighborhood use their green composting bins on a weekly basis. The use of the blue recycling bin was at 9 out of every 10 households (92%). The black trash bins were the most common in use plus, according to Recology, selected bins showed that numerous households mix compost and recyclable materials within the black bin household trash.

San Francisco has a goal of creating zero waste by 2020. That goal, although perhaps unrealistic, certainly cannot be reached if current trends continue. The black bin garbage collected citywide each day amounts to approximately 1,463 tons.

The Merced Extension Triangle is served by Recology-Sunset Scavenger with curbside pickup on Monday mornings. Residents should put their three carts out late on Sunday evening as pickup can begin before 5:00am in the MET.

BLUE CART: recyclable items

- All paper: newspapers, magazines, cardboard, junk mail, and all other paper products
- Glass: all bottles and jars
- Plastic containers: all bottles, tubs and lids
- Metal: Aluminum cans, tin, steel cans, aluminum foil, pie tins, empty metal aerosols, empty metal paint cans (with lids off)
- *Not accepted items:* Plastic bags, Styrofoam, window glass, mirrors, broken glassware, ceramic dishes and cups, coat hangers, diapers, light bulbs of any type, batteries, appliances, electronics

GREEN CART: Compostable food scraps, plant material

- All food: fruit, vegetables, meat, poultry, seafood, shellfish, bones, rice, beans, bread, pasta items, cheese, eggshells
- Food-soiled paper: waxed cardboard, paper beverage cartons/containers, napkins, paper towels, paper plates and cups, coffee grounds, tea bags, small/thin wooden boxes, sawdust
- Plant material: leaves, brush, grass, weeds, yard and tree trimmings cut to small sizes, floral arrangements
- *Not accepted items:* plastics of any type, styrofoam, plastic bags, glass, metal, liquids, dirt, sand, or rocks.

BLACK CART: Non-recyclable, non-compostable items

- Plastic bags, styrofoam products, ceramic dishes and cups, broken glass, plus any other household waste that is not recyclable
- *Not accepted items:* batteries of any type, paints, chemicals of any type, tires, electronic devices of any type. See below for proper information on disposal.

Batteries: Place tape over both ends of lithium batteries. Place batteries in a clear plastic bag and seal the bag. Tape sealed bag to the top of the black cart for pickup.

It is illegal and dangerous to put batteries in the trash.

Chemicals and hazardous waste material: call 3-1-1 for information. Call 415-355-3777 to schedule a pickup, or take unwanted materials to the Household Hazardous Waste Facility at 501 Tunnel Avenue, at Blanken Avenue, Thursdays, Fridays, Saturdays from 8:00am to 4:00pm

Free drop off of household batteries and fluorescent lights: closest location to the MET is Pappenhausen Hardware at 32 West Portal Avenue near Ulloa. Call 415-681-6717 for instructions, including the amount that can be given.

Large bulky item pickup: Appliances, furniture, televisions, computers, electronics, and more, call for pick up at 415-330-1300.

Always call the drop off site first to find out if there are any restrictions or special instructions, including the amounts, that you may wish to bring in for disposal.

Using the proper size bin: Recology-Sunset Scavenger will soon be shifting single family homes from 32-gallon bins for trash and recyclables to 16-gallon trash bins and 64-gallon recycling bins, increasing the capacity of recyclables. Make sure that your household is and will be using the proper size container. You may wish to contact Recology-Sunset Scavenger to request a bin size that fits

Cont'd on page 3

COMMUNITY CALENDAR

METNA MEETING SCHEDULE

7:00pm Palmetto Meeting Hall
@ 640 Palmetto Avenue
Tuesday, August 8, 2017
Tuesday, November 14, 2017

POLICE COMMUNITY MEETING

A new schedule of dates, times, and locations of the Police Community Meetings is available on line at:

TARAVAL POLICE STATION WEBSITE:
www.taraval.org

OCEANVIEW VILLAGE HOA MEETING

@ OceanView Village HOA Office.

Sunday, September 17, 2017, 6:00 pm

NEIGHBORHOOD EMERGENCY RESPONSE TEAM (NERT) TRAINING

St. Aidan's Episcopal Church
101 Gold Mine Drive

Tues. September 12, 6:30p-10:00p: Class 1
Tues. September 19, 6:30p-10:00p: Class 2
Tues. September 26, 6:30p-10:00p: Class 3
Tues. October 03, 6:30p-10:00p: Class 4
Tues. October 10, 6:30p-10:00p: Class 5
Tues. October 17, 6:30p-10:00p: Class 6

Website: < <http://sf-fire.org/nert>>

METNA OFFICERS

President
Marc Christensen
60 Kempton Ave.
415 585-2465
christensen.marc.
metna@gmail.com

Vice-President
Glen Hatakeyama
207 Chester Ave.
415 333-0197
ragtime217@
gmail.com

Secretary
Eric Berquist
233 Chester Ave.
415-939-2377
ericafton@gmail.com

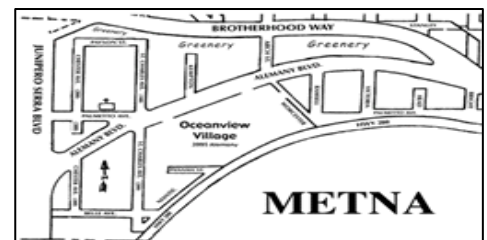
Treasurer
Richard Zerga
1095 Clayton St.
SF 94117
rjz1comcast.net

Sergeant at Arms
Glenn Rogers
3425 Alemany Blvd.
415 -333-9317

Neighborhood
Improvement
Steve Heide
306 St. Charles Ave.
650 892-3648

Executive Committee

Neil Hunt
239 St. Charles Ave.
415-308-3486



Curbside cont'd from page 2

your needs, while not paying for a larger bin that you will not use to capacity.

For quicker pick-up on your block and to save time and expense for Recology, METNA suggests that you place your three bins next to one of your neighbor's three bins (make sure your bins are marked with your address) so that the truck stops less frequently and that the bins can be picked up quickly. When every two households place their bins next to each other the truck can move off your block faster with less noise and pollution. Arrange a location with your neighbor near, but not blocking a driveway, if possible. The drivers appreciate this method. Try it—you'll see that it works. **City Ordinance (Public Works Code 170A/170B; Municipal Health Code 283: Trash bins and carts must not be visible on the sidewalk or in front of a residence:** *"Garbage receptacles shall not be put out for collection before 6:00pm prior to collection day and must be returned to an enclosed area out of view from the public right of way immediately (within 24 hours) after collection."*

Please follow the required procedures to ensure a safe, healthy, and beautiful looking neighborhood.

PROPOSITION E: TREE MAINTENANCE RETURNED TO PUBLIC WORKS ON JULY 1

The City took responsibility of street tree maintenance as of July 1, 2017. The City is currently assessing data from a recently completed street tree evaluation.

According to Public Works, "The pruning of street trees will be prioritized based on safety considerations, to correct structural flaws and to gain necessary clearances for overhead wires, traffic signs and signals, adjacent buildings, and traffic flow." That will be the focus of Public Works Bureau of Urban Forestry over the next several years.

A \$19 million annual set-aside in the City's General Budget will not require any new taxes as a result of Prop E, passed on November 8, 2016.

Under the budget, the City will be responsible for any tree related sidewalk damage. It is important to note that Prop E only covers tree and sidewalk maintenance and not the planting of new trees.

Beginning in July of 2018 a pruning schedule will be posted at spublicworks.org/trees. The site is now available for general information regarding street trees.

RECORD RAIN FALL IN THE MET

An unofficial total of 39.4 inches of rain fell in the Merced Extension Triangle during the past fiscal year, July 1, 2016 to June 30, 2017. An unofficial backyard rain gauge measured 3.5 inches of rain between July 1st and October 1st. November showed 4.3 inches of rain, while December measured 5.1 inches (the same as the previous year for December). The major amount of rain hit in January and February of this year, traditionally the wettest months of the year, with 9.8 inches and 10.1 inches, respectively. March saw 3.9 inches fall in the MET, and in April the rain gauge measured 2.3 inches. May and June saw 0.4 inches of rainfall.

This compares with the 2014-15 year when a total of only 11.5 inches fell for the entire season, and the 2015-16 year when 19.2 inches were recorded. The National Weather Service reported 31.7 inches of rainfall in San Francisco this year.

OCEANVIEW VILLAGE HOUSING RECONSTRUCTION

The construction project at OceanView Village is in its final phase with the work scheduled to be completed at the end of the year. The project which began in September of 2013 provides new outer envelopes to all five buildings.

"This project has been a remarkable journey for the Association," states Michael Gollnick, General Manager of OceanView Village. "Three years of litigation and four years of construction have given us a chance to make the property better than it has ever been. There is plenty of optimism among the homeowners."

The project is being completed by AC Enterprises and Ferrari-Moe.

METNA ARTICLE UPDATES

19th AVE/JUNIPERO SERRA INTERSECTION IMPROVEMENT PROJECT IS DELAYED FOR A SECOND TIME

As first reported in the May, 2016 METNA News, the 19th Avenue/Junipero Serra Improvement Project has once again been delayed. Originally scheduled to begin a year ago, the project was delayed until early 2017, and since delayed for a second time. No date has been given to begin work. The safety improvements at the intersection will involve new curb ramps, the relocation and replacement of signal lights with a transit signal priority, a new pedestrian refuge spot in the median, along with the paving and realignment of northbound Highway 1 lanes from Junipero Serra on to 19th Avenue.

When work does begin northbound motorists can expect delays. The project will take several months to complete.

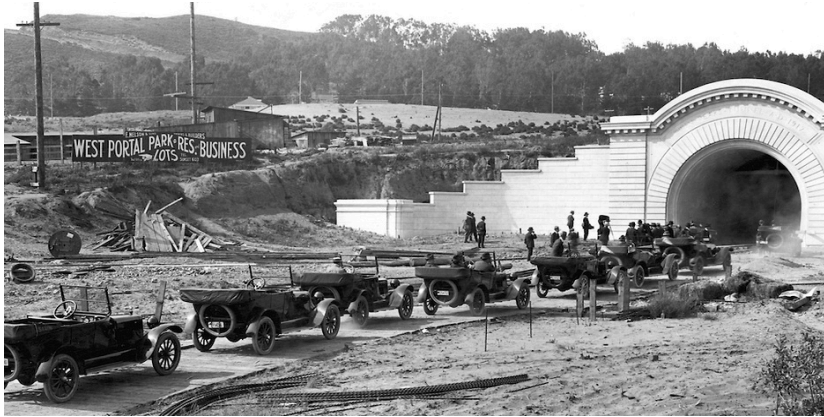
SISTERHOOD GARDENS

During the past several months construction of additional planter boxes has taken place. There are now twelve planter boxes to accommodate over 40-plus gardeners. The plan in the coming months is to build additional planter boxes. Gardeners began planting their individual plots on June 10th.

A Community Challenge Grant was granted which will provide additional funding to secure supplies, build public seating and picnic tables, build a pollinator garden, purchase interpretive signage, and build a notification kiosk.

MET COMMUNITY CONNECTORS

The Merced Extension Triangle is about to become one of only three neighborhoods in San Francisco to receive funds for the MET Community Connectors program, thanks to District 7 Participatory Budget funding. The program is anticipated to begin toward the end of the year to develop a community network and supportive safety net program for seniors, people living alone, including persons with disabilities. It will provide free services to allow individuals to stay in the neighborhood and serve as a social and educational component. METNA is encouraging residents who wish to be a part of MET Community Connectors to sign up at the August 8th METNA neighborhood meeting, or by contacting a METNA officer.



Auto caravan entering West Portal of Twin Peaks Tunnel, June 17, 1917

Photo courtesy of SFMTA Photography Department

Twin Peaks cont'd from page 1

It was in 1868 that the Spring Valley Water Company purchased the water rights to Lake Merced and prior to the turn of the 20th century owned all the land from Sloat Boulevard on the north to well beyond the county line to the south, and from Junipero Serra Boulevard on the east to the Pacific Ocean to the west. From the 1910s to the 1930s Spring Valley sold land to various developers in the area as well as to golf courses and the City of San Francisco for expansion to the west.

At the turn of the 20th century, J.W. Wright & Company marketed lots for a plot called "Ocean View Park." This land, renamed by developers in the early 1940s, is now known as the Merced Extension Triangle.

The land was developed in part because of the two Municipal Railway streetcar lines that ran from the West Portal of the Twin Peaks Tunnel southward on the West Portal corridor, the K-Ingleside along Ocean Avenue, and the M-Oceanview along 19th Avenue, Randolph and Broad Streets.

In the next two issues of the METNA News we will explore the history of the area, in the early 1900s, up to the opening of the Twin Peaks Tunnel on February 3, 1918.

NEIGHBORHOOD WATCH

A DIRECT LINK TO PUBLIC WORKS AND CALTRANS

METNA and other neighborhood associations will soon have a seat at the table at meetings between Public Works and CalTrans to discuss issues of mutual concern.

METNA president Marc Christensen proposed the idea to Mayor Ed Lee, Assemblymember Phil Ting, and to Public Works Director Mohammed Nuru in response to CalTrans lack of timely responsiveness to issues of safety and cleanliness in various areas along CalTrans right-of-ways. The proposal has met with a favorable response. Implementation will soon take place and requests to periodically meet will be discussed on a case-by-case basis.

SISTERHOOD GARDENS CONTINUES BUILDOUT

There is currently a wait list for planting plots at Sisterhood Gardens. Persons interested in a plot should sign up with Kristin Rosboro, Executive Director of

IT Bookman Community Center, 446 Randolph St., 415-586-8020. Volunteers are needed to complete several planter boxes to provide plots for those individuals on the wait list. Saturday work-days will continue in August and September. For questions and information go to: www.facebook.com/sisterhoodgardens.

JOIN AND SUPPORT METNA

The METNA News has been delivered to all residents in the Merced Extension Triangle free for the past seventeen years. Dues are \$15 per year per household. METNA continues to be involved in various projects and issues that enhance the safety, beauty, and quality of life. Support your association as we support you.

To join, make a check payable to METNA for \$15, and mail it to Rich Zerga, Treasurer 1095 Clayton St., San Francisco, CA 94117.

MEET YOUR NEIGHBORHOOD MERCHANTS

SILAWAY CRUISES

Cruise and Land Vacations

Owners: Dennis & Claire Sanchez

3990 Alemany Blvd., Suite A

Phone: 415-334-3700

E-mail: info@silawaynow.com

Monday - Friday, 9:00am - 5:00pm

Weekends by appointment only

Dennis and Claire Sanchez are charter members of METNA and longtime supporters of our neighborhood.

They have owned their travel agency for twenty years and have extensive travel experience. They specialize in both ocean and riverboat cruises and also offer land based tours and vacations.

Dennis and Claire state, "Personalized, knowledgeable, and friendly service is what best describes us. Our goal is to help make your next vacation memorable and affordable. Please check out our 5 Star Yelp reviews."

Thinking of a vacation? Let Dennis and Claire help you plan your next getaway.

SUPPORT YOUR NEIGHBORHOOD MERCHANTS

JOIN METNA

METNA REMINDER

PARKING VEHICLES ON A SIDEWALK CVC, SECTION 22500f

The California Vehicle Code, Section 22500f prohibits the parking, stopping or standing of a vehicle on any portion of the sidewalk, or with the body of the vehicle extending over a portion of the sidewalk, property line to curb line.

The San Francisco Municipal Transportation Agency (SFMTA) which is in charge of parking enforcement states, "Parking on the sidewalk is a hazard to pedestrians and disabled individuals and is subject to a fine." The parking fine was increased to \$110 as of July, 2016. Enforcement is 24 hours a day. This remains a critical safety issue especially for young children, the elderly, and wheelchair users if they have to enter the street to pass. Please be courteous and encourage safety by not blocking the sidewalk at any time.

